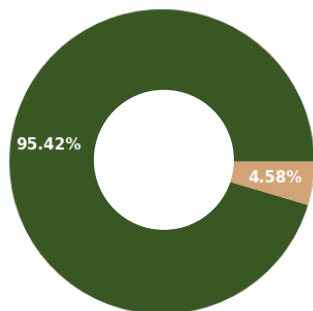
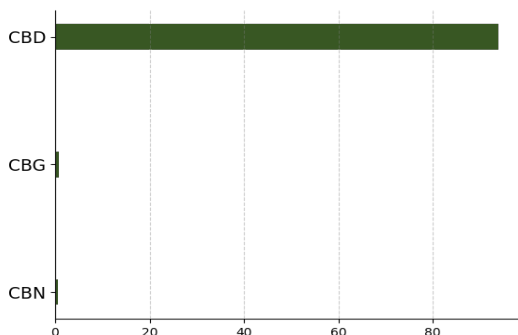


Blue Dream CBD Crumble

Batch ID:	21C2022112	Received:	12/23/2021	Analysis:	18 Cannabinoid Potency
Sample Type:	Concentrate	Analyzed:	12/28/2021	Method:	2021.18P.01
		Test ID:	2231	Equipment:	UHPLC

CANNABINOID PROFILE
TOTAL CANNABINOID CONTENT


Legend
■ Cannabinoids
■ Other



Cannabinoid	LOD (%)	LOQ (%)	Result (%)	Result (mg/g)
Cannabidiol (CBD)	4.29e-05	1.30e-04	93.96 ± 2.5	939.60
Cannabigerol (CBG)	4.11e-05	1.25e-04	0.84 ± 0.023	8.38
Δ9-Tetrahydrocannabinol (Δ9-THC)	7.72e-05	2.34e-04	ND	ND
Cannabicitran (CBT)	3.95e-05	1.20e-04	ND	ND
Cannabichromene (CBC)	6.99e-05	2.12e-04	ND	ND
Cannabinol (CBN)	3.93e-05	1.19e-04	0.62 ± 0.017	6.20
Cannabicyclol (CBL)	4.58e-05	1.39e-04	ND	ND
Cannabicyclic acid (CBLA)	4.00e-05	1.21e-04	ND	ND
Tetrahydrocannabivarin (THCV)	4.04e-05	1.23e-04	ND	ND
Δ8-Tetrahydrocannabinol (Δ8-THC)	4.73e-05	1.43e-04	ND	ND
Cannabinolic (CBNA)	4.70e-05	1.42e-04	ND	ND
Tetrahydrocannabivarin Acid (THCVA)	3.66e-05	1.11e-04	ND	ND
Cannabigerolic acid (CBGA)	3.98e-05	1.21e-04	ND	ND
Cannabidiolic acid (CBDA)	4.15e-05	1.26e-04	ND	ND
Cannabidivarin (CBDV)	3.97e-05	1.20e-04	ND	ND
Tetrahydrocannabinolic Acid (THCA)	3.86e-05	1.17e-04	ND	ND
Cannabichromenic acid (CBCA)	3.99e-05	1.21e-04	ND	ND
Cannabidivarinic Acid (CBDVA)	3.99e-05	1.21e-04	ND	ND
Total Cannabinoid**			95.42	954.18
Total Potential THC*			ND	ND
Total Potential CBD*			93.96 ± 2.5	939.60
Total Potential CBG*			0.84 ± 0.023	8.38

* Total Potential THC/CBD/CBG is calculated using the following formulas to consider the loss of a carboxyl group during decarboxylation step.

* Total THC = THC + (THCa *(0.877)) and Total CBD = CBD + (CBDA *(0.877)) and Total CBG = CBG + (CBGa*(0.877))

** Total Cannabinoids result reflects the absolute sum of all cannabinoids detected.

% = % (w/w) = Percent (Weight of Analyte / Weight of Product)

REMARKS

Passed visual inspection for particulates, mold, mildew, and other foreign substances.

FINAL AUTHORIZATION


Alex Bujanow, Microbiologist
 12/28/2021 12:03 PM

ANALYZED BY/DATE



Brian McCoy, Analytical Chemist
 12/28/2021 12:08 PM

AUTHORIZED BY/DATE



Logan Cline, Director of Analytical Development
 12/28/2021 12:15 PM

RELEASED BY/DATE

Laboratory results are based on the sample submitted to Extract Labs, INC, in the condition it was received. Extract Labs, INC, warrants that all analyses performed are in accordance with ISO/IEC 17025:2017. All data is generated using NIST traceable reference material and all reports are produced with the highest regard for scientific integrity. Reports can only be reproduced with the written consent of Extract Labs, INC.

Blue Dream CBD Crumble

Batch ID:	21C2022112	Received:	12/23/2021	Analysis:	Residual Solvents
Sample Type:	Concentrate	Analyzed:	12/28/2021	Method:	2021.RS.01
		Test ID:	2232	Equipment:	GCMS

RESIDUAL SOLVENTS

SOLVENT	REPORTABLE RANGE	RESULT (ppm)
Acetone	100 - 1000	*ND
Acetonitrile	100 - 1000	*ND
Benzene	0.2 - 4	*ND
Butanes	100 - 1000	*ND
Ethanol	100 - 1000	*ND
Ethyl Acetate	100 - 1000	*ND
Heptane	100 - 1000	*ND
Hexanes	6 - 120	*ND
Isopropyl Alcohol	100 - 1000	*ND
Methanol	100 - 1000	*ND
Pentanes	100 - 1000	*ND
Propane	100 - 1000	*ND
Toluene	18 - 360	*ND
Xylenes	43 - 860	*ND

*ND = Below Reportable Range

REMARKS

Passed visual inspection for particulates, mold, mildew, and other foreign substances.

FINAL AUTHORIZATION


 Alex Bujanow, Microbiologist
 12/28/2021 01:28 PM

ANALYZED BY/DATE


 Brian McCoy, Analytical Chemist
 12/28/2021 01:30 PM

AUTHORIZED BY/DATE


 Logan Cline, Director of Analytical Development
 12/28/2021 06:59 PM

RELEASED BY/DATE

Laboratory results are based on the sample submitted to Extract Labs, INC, in the condition it was received. Extract Labs, INC, warrants that all analyses performed are in accordance with ISO/IEC 17025:2017. All data is generated using NIST traceable reference material and all reports are produced with the highest regard for scientific integrity. Reports can only be reproduced with the written consent of Extract Labs, INC.



License No. 800025015
 FL License # CMTL-0003
 CLIA No. 10D1094068

Certificate of Analysis

Compliance Test

Extract Labs
 3620 Walnut St
 Boulder, CO 80301

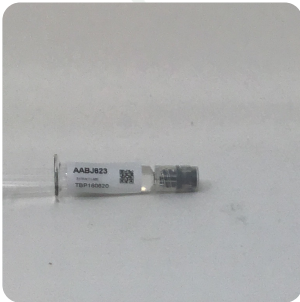
Batch # TBP160620
 Batch Date: 2021-05-20
 Extracted From: Hemp

Test Reg State: Oregon

Order # EXT210520-050030
 Order Date: 2021-05-20
 Sample # AABJ623

Sampling Date: 2021-05-25
 Lab Batch Date: 2021-05-25
 Completion Date: 2021-06-08

Initial Gross Weight: 7.367 g



Product Image



Potency Panel Not Included

Terpenes Summary

Analyte	Result (mg/ml) (%)	
trans-Caryophyllene	223.704	22.37%
(R)-(+)-Limonene	137.98	13.798%
beta-Myrcene	84.613	8.461%
alpha-Humulene	71.933	7.193%
Linalool	43.477	4.348%
Farnesene	22.734	2.273%
beta-Pinene	13.344	1.334%
alpha-Pinene	12.305	1.231%
Terpineol	11.261	1.126%
Fenchyl Alcohol	10.09	1.009%
Caryophyllene oxide	9.727	0.973%
Eucalyptol	5.682	0.568%
trans-Nerolidol	4.321	0.432%
Terpinolene	4.235	0.424%
Camphene	3.121	0.312%
Geranyl acetate	2.152	0.215%
Gamma-Terpinene	2.093	0.209%
Ocimene	0.628	0.063%

Total Terpenes: 66.339%

Detailed Terpenes Analysis is on the following page

Xueli Gao
 Xueli Gao Lab Toxicologist
 Ph.D., DABT

Aixia Sun
 Aixia Sun Lab Director/Principal Scientist
 D.H.Sc., M.Sc., B.Sc., MT (AAB)



Definitions and Abbreviations used in this report: *Total CBD = CBD + (CBD-A * 0.877), *Total THC = THCA-A * 0.877 + Delta 9 THC, *CBG Total = (CBGA * 0.877) + CBG, *CBN Total = (CBNA * 0.877) + CBN, *Other Cannabinoids Total = CBC + CBDV + THCV + THCV-A, *Total Detected Cannabinoids = CBD Total + CBG Total + CBN Total + THC Total + CBC + CBDV + THCV + THCV-A, *Analyte Details above show the Dry Weight Concentrations unless specified as 12% moisture concentration. (mg/ml) = Milligrams per Milliliter, LOQ = Limit of Quantitation, LOD = Limit of Detection, Dilution = Dilution Factor (ppb) = Parts per Billion, (%) = Percent, (cfu/g) = Colony Forming Unit per Gram (cfu/g) = Colony Forming Unit per Gram, LOD = Limit of Detection, (µg/g) = Microgram per Gram (ppm) = Parts per Million, (ppm) = (µg/g), (aw) = aw (area ratio) = Area Ratio, (mg/Kg) = Milligram per Kilogram



This report shall not be reproduced, without written approval, from ACS Laboratory. The results of this report relate only to the material or product analyzed. Test results are confidential unless explicitly waived otherwise. Accredited by a third-party accrediting body as a competent testing laboratory pursuant to ISO/IEC 17025 of the International Organization for Standardization.



License No. 800025015
 FL License # CMTL-0003
 CLIA No. 10D1094068

Certificate of Analysis

Compliance Test

Extract Labs
 3620 Walnut St
 Boulder, CO 80301

Batch # TBP160620
 Batch Date: 2021-05-20
 Extracted From: Hemp

Test Reg State: Oregon

Order # EXT210520-050030
 Order Date: 2021-05-20
 Sample # AABJ623

Sampling Date: 2021-05-25
 Lab Batch Date: 2021-05-25
 Completion Date: 2021-06-08

Initial Gross Weight: 7.367 g



Terpenes - FL

Specimen Weight: 105.300 mg

Tested
 (GC/GCMS)

Dilution Factor: 10000.000

Analyte	LOQ (%)	Result (mg/g)	(%)	Analyte	LOQ (%)	Result (mg/g)	(%)
trans-Caryophyllene	0.02	223.704	22.370	(R)-(+)-Limonene	0.02	137.980	13.798
beta-Myrcene	0.02	84.613	8.461	alpha-Humulene	0.02	71.933	7.193
Linalool	0.02	43.477	4.348	Farnesene	0.02	22.734	2.273
beta-Pinene	0.02	13.344	1.334	alpha-Pinene	0.02	12.305	1.231
Terpineol	0.02	11.261	1.126	Fenchyl Alcohol	0.02	10.090	1.009
Caryophyllene oxide	0.02	9.727	0.973	Eucalyptol	0.02	5.682	0.568
trans-Nerolidol	0.02	4.321	0.432	Terpinolene	0.02	4.235	0.424
Camphene	0.02	3.121	0.312	Geranyl acetate	0.02	2.152	0.215
Gamma-Terpinene	0.02	2.093	0.209	Ocimene	0.014	0.628	0.063
Nerol	0.02	<LOQ	<LOQ	(+)-Cedrol	0.02	<LOQ	<LOQ
Pulegone	0.02	<LOQ	<LOQ	Isopulegol	0.02	<LOQ	<LOQ
Sabinene Hydrate	0.02	<LOQ	<LOQ	Sabinene	0.02	<LOQ	<LOQ
Fenchone	0.02	<LOQ	<LOQ	Isoborneol	0.02	<LOQ	<LOQ
Hexahydrothymol	0.02	<LOQ	<LOQ	Guaiol	0.02	<LOQ	<LOQ
Geraniol	0.02	<LOQ	<LOQ	cis-Nerolidol	0.02	<LOQ	<LOQ
Camphors	0.04	<LOQ	<LOQ	Borneol	0.04	<LOQ	<LOQ
alpha-Terpinene	0.02	<LOQ	<LOQ	alpha-Phellandrene	0.02	<LOQ	<LOQ
alpha-Cedrene	0.02	<LOQ	<LOQ	alpha-Bisabolol	0.02	<LOQ	<LOQ
3-Carene	0.02	<LOQ	<LOQ	Valencene	0.02	<LOQ	<LOQ

Total Terpenes: 66.339%

Xueli Gao
 Xueli Gao Lab Toxicologist
 Ph.D., DABT

Aixia Sun
 Aixia Sun Lab Director/Principal Scientist
 D.H.Sc., M.Sc., B.Sc., MT (AAB)



Definitions and Abbreviations used in this report: *Total CBD = CBD + (CBD-A * 0.877), *Total THC = THCA-A * 0.877 + Delta 9 THC, *CBG Total = (CBGA * 0.877) + CBG, *CBN Total = (CBNA * 0.877) + CBN, *Other Cannabinoids Total = CBC + CBDV + THCV + THCV-A, *Total Detected Cannabinoids = CBD Total + CBG Total + CBN Total + THC Total + CBC + CBDV + THCV + THCV-A, *Analyte Details above show the Dry Weight Concentrations unless specified as 12% moisture concentration. (mg/ml) = Milligrams per Milliliter, LOQ = Limit of Quantitation, LOD = Limit of Detection, Dilution = Dilution Factor (ppb) = Parts per Billion, (%) = Percent, (cfu/g) = Colony Forming Unit per Gram (cfu/g) = Colony Forming Unit per Gram, , LOD = Limit of Detection, (µg/g) = Microgram per Gram (ppm) = Parts per Million, (ppm) = (µg/g), (aw) = aw (area ratio) = Area Ratio, (mg/Kg) = Milligram per Kilogram



This report shall not be reproduced, without written approval, from ACS Laboratory. The results of this report relate only to the material or product analyzed. Test results are confidential unless explicitly waived otherwise. Accredited by a third-party accrediting body as a competent testing laboratory pursuant to ISO/IEC 17025 of the International Organization for Standardization.

Product Specification

Blue Dream CBD Crumble – 800mg

Product Information

Product	Blue Dream CBD Crumble
Botanical name	<i>Cannabis sativa</i> L.
Plant Part	Flower
Country of Origin	USA
Extraction Process	CO2 Extraction, Winterization, Distillation, Chromatography
Ingredient Statement	CO2 Extracted Broad Spectrum CBD Distillate, Natural Terpenes

Organoleptic Description

Appearance	Light to medium honey-color, dry, crystallized sugar wax
Aroma	Pepper, Lemon, Herbal, Hops, Lavender
Taste	Sweet berries

Physical Characteristics

Cannabidiol Content (CBD):	>800mg
Tetrahydrocannabinol Content (THC):	=0.0

Shelf Life

Shelf life in original glass jar for up to 1 year.

Packaging

Gross weight 1.2oz (35g), net weight 1g
Packaged in 7ml clear glass jar, screw top with pressure seal
Larger quantities by arrangement

Recommended Storage Conditions

Store at ambient conditions in airtight container.

Kosher Certification

Blue Dream CBD Crumble is certified Kosher by the Orthodox Union, UKD-ID: OUV3-5YAABHK.

GMP Certification

This product was produced in a cGMP Compliant Facility, audited through Eurofins, Certificate #4949.

I declare that the information given is believed to be correct as of date specified below.

Name: Nick Peters

Title: Quality Manager

Date: May 13, 2021